

Fire-tube Boiler

High Pressure Steam- and
Hot Water Boiler

Single- and Double Furnace

About us

In 1983 the company GETABEC was formed to sale, distribute and install German steam boilers and related equipment in Thailand. During the strong industrialization of Thailand the demand for fire tube boiler increased. The co-operation with German Companies and know how providers led to the name "German Thai Boiler Engineering Company or in short GETABEC.

In the nearly 40 years of history GETABEC has emerged ass one of the leading Boiler and Pressure Vessel Manufacturer in South East Asia. Two factories in Thailand with state of art production facilities, a team of multi-discipline Engineers, a motivated and high skilled work force ensure that each request is treated with required attention.

Starting with the formation of GETABEC until now, it is always the desire of GETABEC to fulfill the customer requirements towards quality and reliability of products services. Already in 1995 Getabec implemented a quality management system covering all process in the organization. GETABEC also implemented a quality control system to ensure that our boilers are meeting the strict requirements of the ASME code as well of the European Directive for Pressure Equipment. On request by the client, GETABEC will be able to deliver the boiler and pressure vessel either with the CE Mark or as stamped ASME Boiler and pressure vessel.



GETABEC has delivered boilers and pressure vessels in all parts of the world. It also started its international sales network by opening of GETABEC Vietnam Co., Ltd in 2014. In 2019 GETABEC formed together with its long term Partner Schneider Kessel Germany an Engineering Company, as Schneider Energy System GmbH, not only to cater the European Market, but also to support GETABEC's desire to design highly efficient and environmental protecting products



GETABEC's Policy statement

GETABEC recognizes that our work and all our action will have an impact on society and that our products will change the environment.

We are committed to work on designing and manufacturing our products with a holistic perspective of humans and the environment.

We are aiming towards sustainability, which will benefit the environment and our society.

With our key values:

- Social Responsibility
- Quality
- Technology

GETABEC aims to grow by partnering with our customers.

We strive towards continual improvement of our products and performance.

With innovation we are aiming to make this world a better place.

History means Experience

The GETABEC Shell Boiler is the working horse in the Industry. It is designed and manufactured to the European Code for Shell Boiler EN12953. All our design has been approved by TÜV of Germany. GETABEC is using the time approved design under the license of Schneider Kessel Berlin Germany. Experience, an innovative design is the symbiosis which creates State of Art Boiler

GETABEC single and double furnace tube boilers are high efficient steam and hot water boilers for every application, in various designs with energy saving system and fully automatic operation without need of constant supervision. These boilers designed to the three pass, wet-back principles.



The water content can be quickly transformed into steam. Our boilers always have sufficient steam reserve, even during sudden peak demand period. Using gas, oil or dual fuel burner, the flame intensity is matched virtually instantly to the steam or hot water consumption, taking into account the fuel characteristic. Another positive factor is that a large furnace tube effectively reduces the **NOx emission**.



The GETABEC Boiler can cope easily with peak and low demand periods for steam or hot water. The Boiler can produce saturated steam, superheated steam and high pressure hot water GETABEC not only supplies the boiler, but also the boiler house equipment such as Feedwater system from treatment, deaeration to chemical dosing, Condensate Recovery system and boiler house piping.



THE FUEL OPTIONS

GETABEC's boiler can be combined with various burners for a varieties of fuel such as

- Light and heavy oil
- LPG and CNG

Today's requirements to reduce the carbon emission we also offer

- **Biogas Boilers**
- **Biooil Boilers**

Together with customer we will select the burner for the optimum performance.

This boiler type can also be used as Waste Heat Recovery



High pressure steam generators Single Flame-Tube

- Output per boiler up to 35 t Steam per hour (Gas fired)
- Operating pressure up to 24 bars



High pressure steam generators Double Flame-Tube

When single furnace boilers reach the limitation than GETABEC offers the double flame-tube Boiler. This boiler allows the design offers economic steam generation requiring a relatively small space for installation. The complete separation of the two combustion passes allows single flame tube operation. The flue gas flow of both burners are consequently separated starting at the furnace up to outlet chamber.

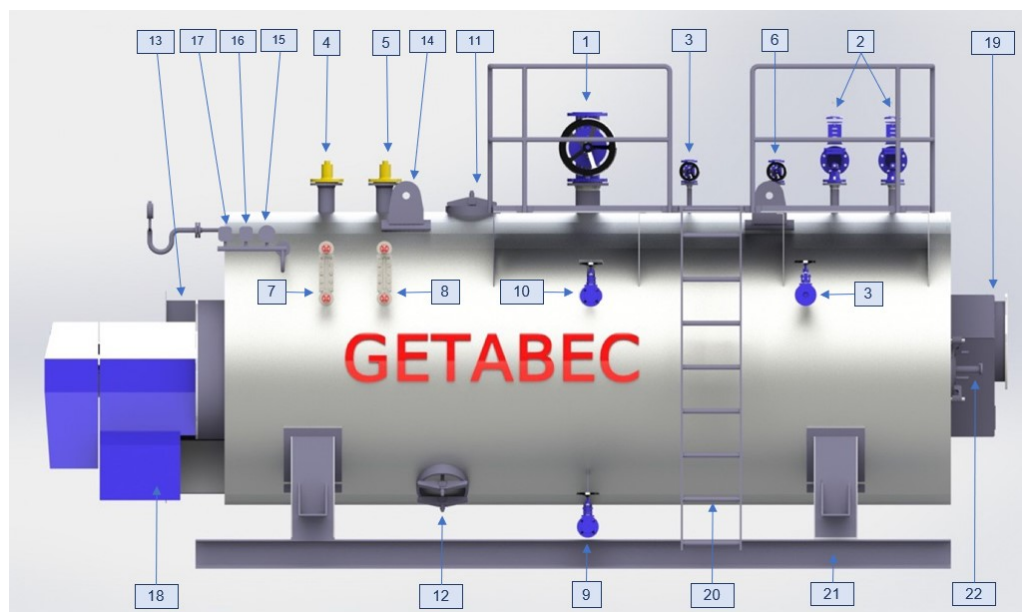
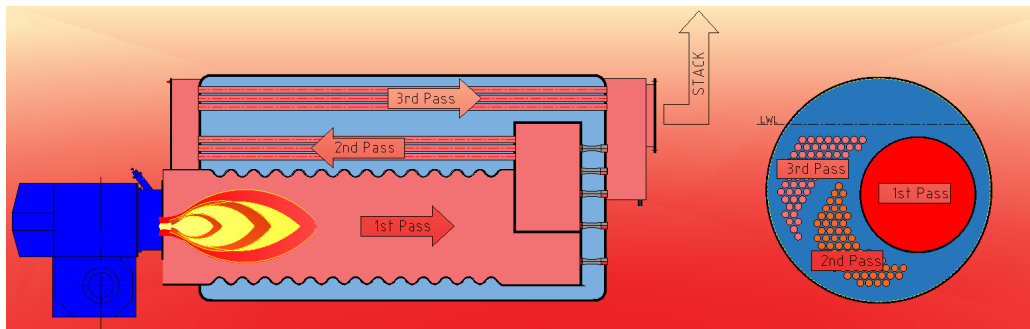
- Output per boiler up to 41 t Steam per hour (Light oil)
52 t Steam per hour (natural gas)



THE GETABEC Firetube Boiler

GETABEC's Firetube boiler are built as a three pass boiler. It indicates that the fluegas stream is reversed two times before it will pass to the stack.

The GETABEC Firetube boiler is built in a full wetback design, whereby the flue gas reversing chamber from 1st to 2nd pass is complete submerged in water. This allows a significant reduction of thermal stress to the boiler during operation



- | | |
|-----------------------------------|----------------------------|
| 1. Main steam valve | 12. Head Hole |
| 2. Safety valve | 13. Front reversal chamber |
| 3. Feed water valve | 14. Lifting Lug |
| 4. Water level control | 15. Pressure Gauge |
| 5. Water level alarm | 16. Pressure switch |
| 6. Vent valve | 17. Pressure Transmitter |
| 7. Water level Indicator | 18. Burner |
| 8. Water level Indicator (Option) | 19. Flue gas outlet |
| 9. Bottom blowdown valve | 20. Platform & Ladder |
| 10. Surface blowdown valve | 21. Base frame |
| 11. Man Hole | 22. Flame inspection hole |

THE GETABEC SOLUTION

Environmental friendliness is the governing concept in **GETABEC** using technologies which have been proven records in the world. We are using the services of technology provider from the world over to provide the state of art technology to our clients

Technologies and process are changing on a nearly daily basis. The laws the customer requirements are driving the requirements to provide environmental, safe but also economical feasible products to our more and more technology driven world. Customers sometimes feeling overwhelmed with the quantity and variation of products. How to select the best boiler? What is the environmental impact? What is the automation degree in the operation?

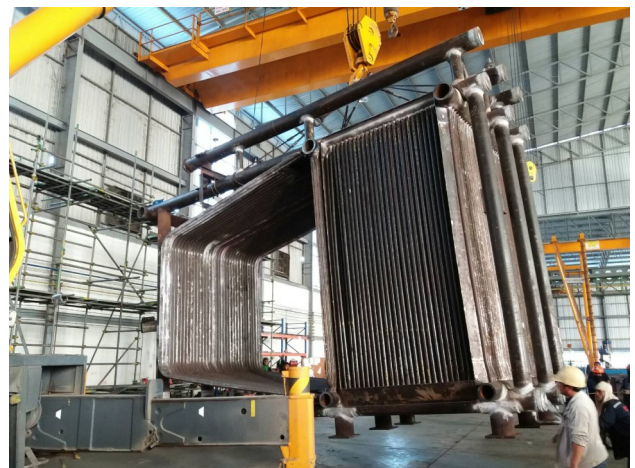
Questions which will be answered by the GETABEC Team. We offer the complete solution from planning to the selection of the boiler and other related equipment, from manufacturing and expediting, delivery and installation to commissioning and training. As the latest add on service we offer the **operation of the boiler plant** and/or the **supply of steam** to our client. GETABEC offer the all-around carefree solution

Complete Engineering Solution



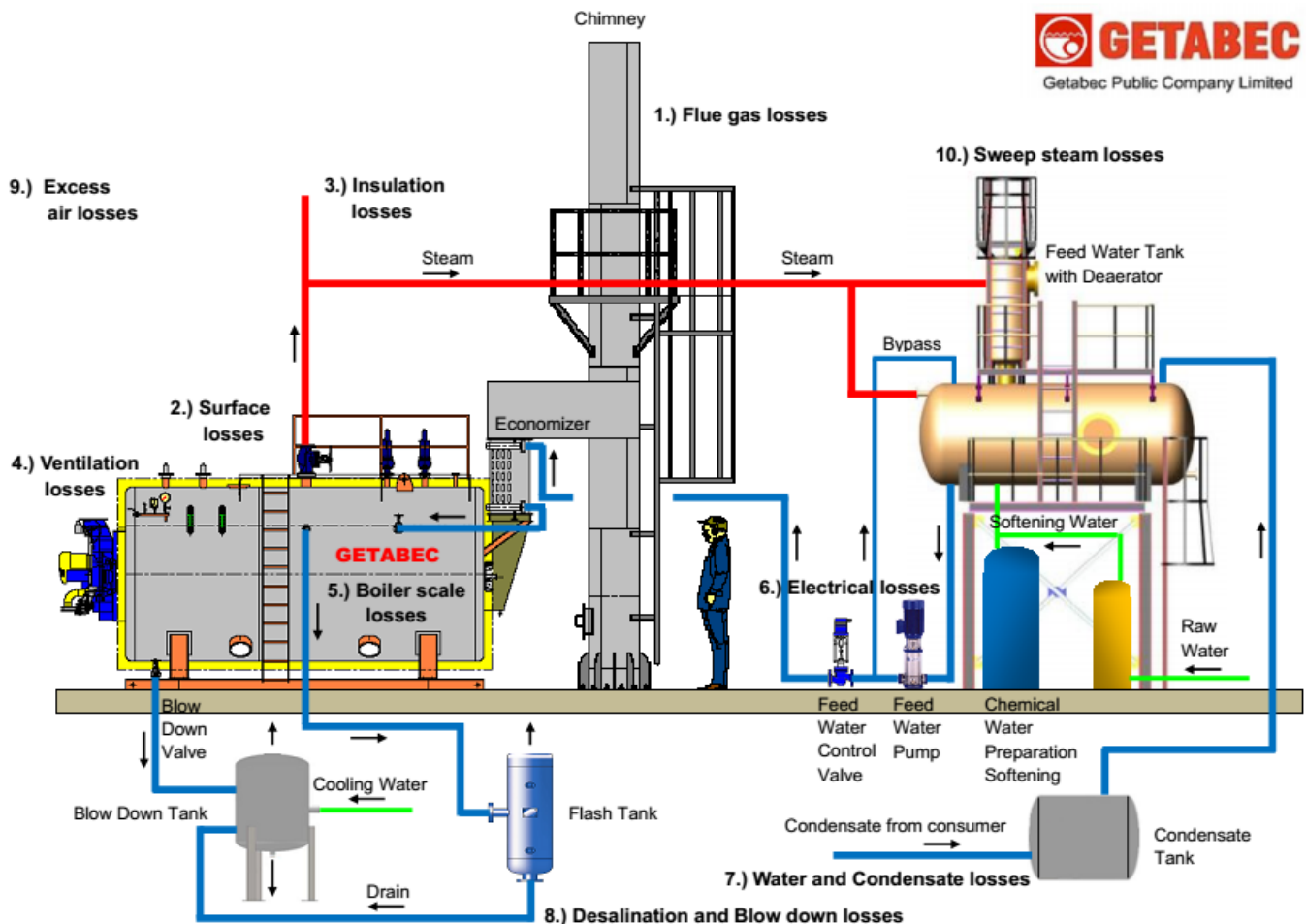
Complete Project Management Solution

Complete Manufacturing Solution



THE GETABEC BOILER EFFICIENCY PACKAGE

We all have to contribute to fight the global warming. GETABEC recognize that we have to provide new solution to our customer to reduce the emission. GETABEC has generated the boiler efficiency package, a bouquet of measures to reduce fuel consumption, reduce the direct emissions and also the life time of our products. We also implement measures to reduce the carbon food print during the manufacturing process of the equipment



Already in the design stage it is essential to cooperate with us to select the right boiler size that the client can have the optimum performance of the boiler without any compromises.

Together with the client we identify potential and actual risk of losing energy with the aim to optimize the design of the boiler, burner and the auxiliary equipment to reduce the emission. We are committed to harvest all the waste energy as our contribution to a better environment.

These packages are available for new and existing plants.

Let's harvest the waste energy

GETABEC Vietnam Company Limited

30 Cao Duc Lan, An Phu, Thu Duc City,

Hồ Chí Minh City

Vietnam

Tel.: + 84 (0) 28 7106 2010

Email: info@getabecboiler.com.vn

web : www.getabecboiler.com.vn

